

# Life cycle of *Physarum pol ycephalum*

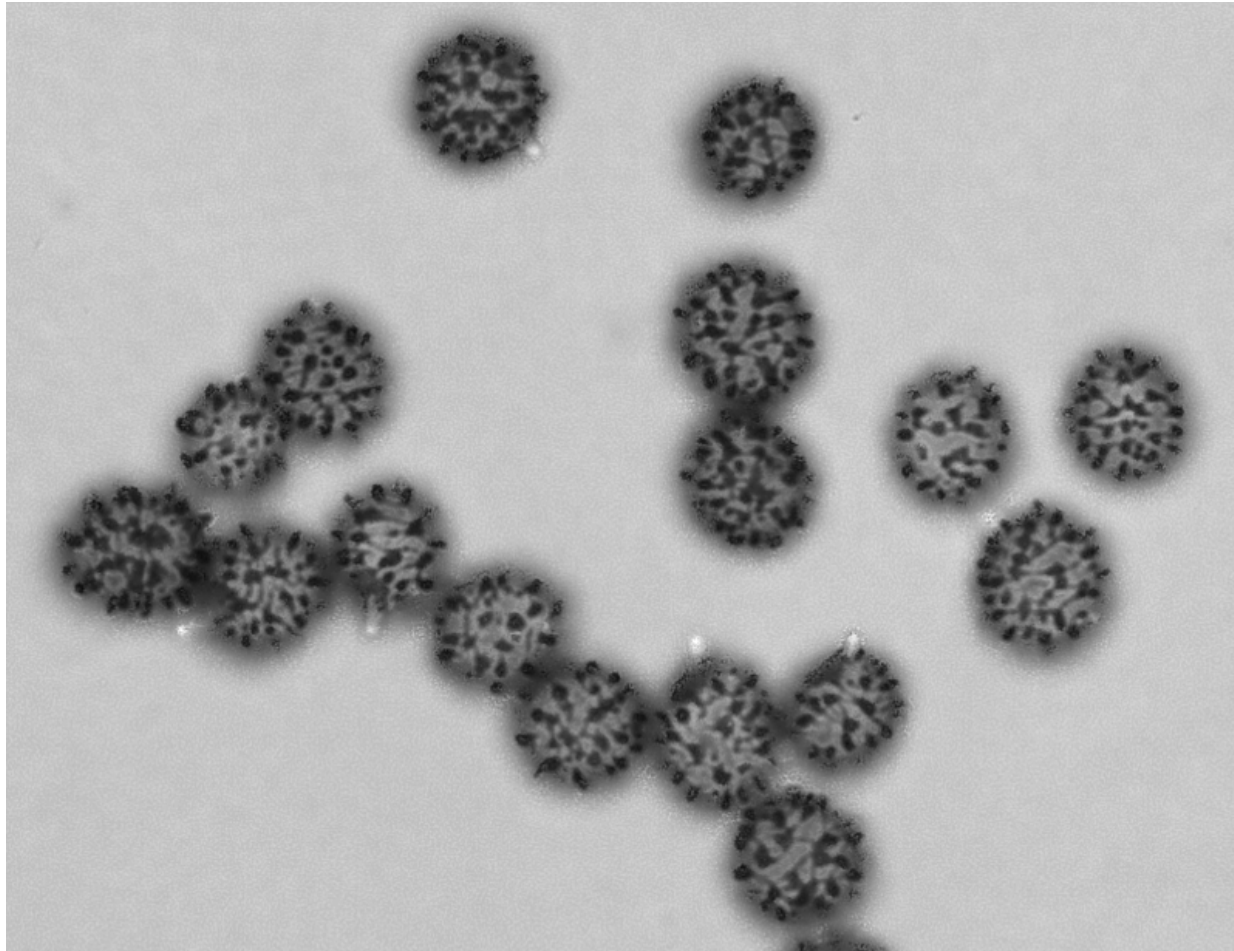


Presented By – Mr. N. B. YeMul  
AssistAnt Professor

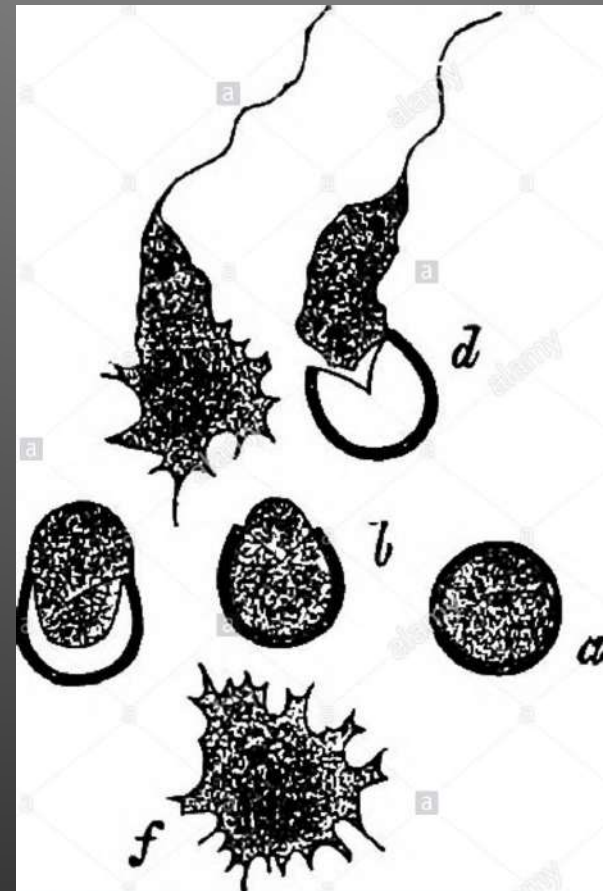
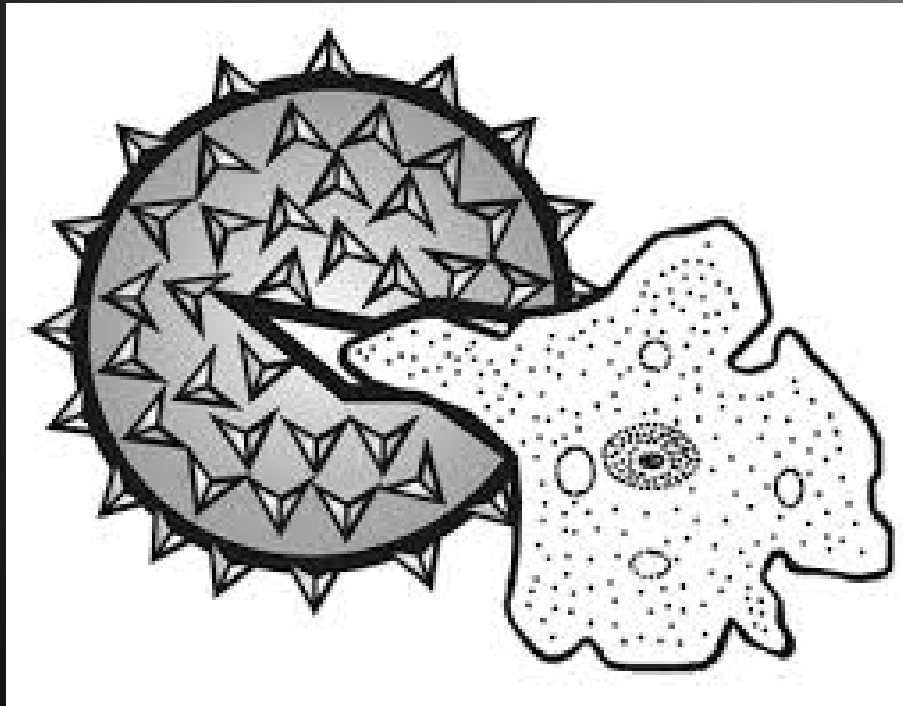
***DEPARTMENT OF BOTANY, GOV. INSTITUTE OF SCIENCE, NAGPUR***



# Spores



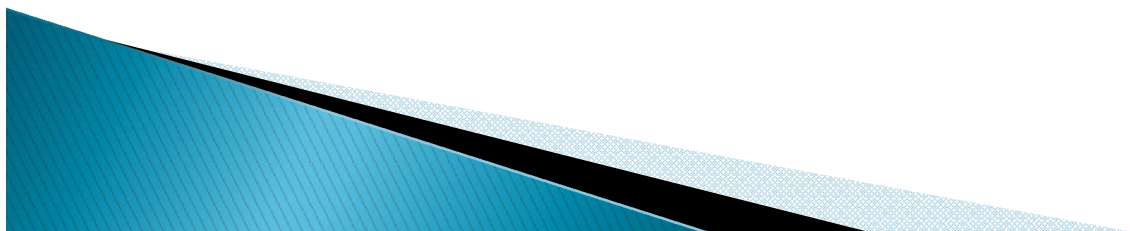
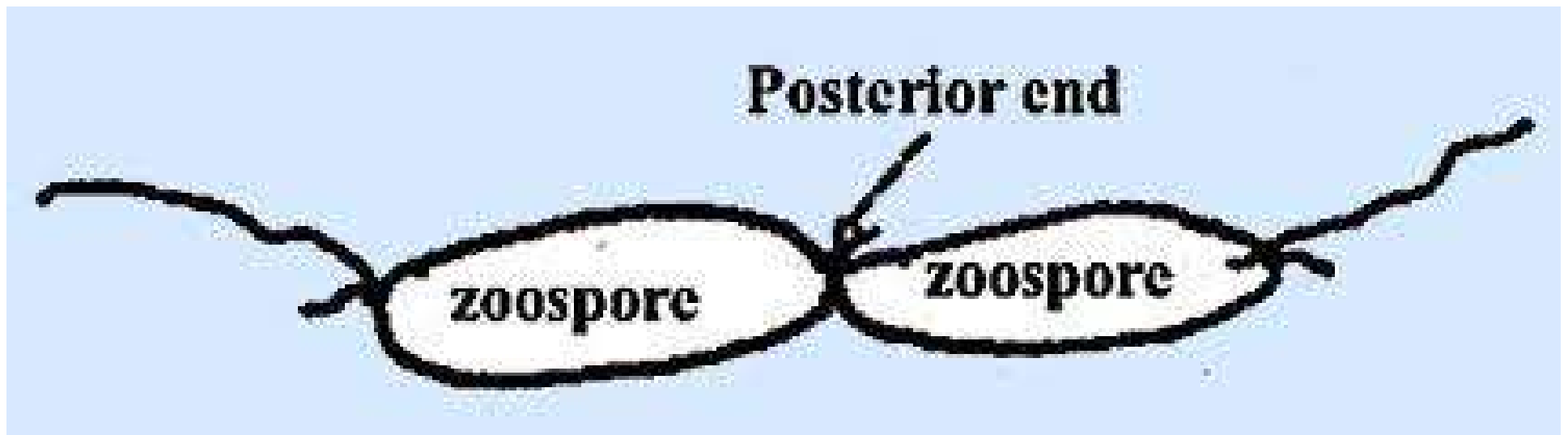
# Myxamoebae and Zoospores



a alamy stock photo

PQ26BW  
www.alamy.com

# Fusion of gametes





# Young plasmodium

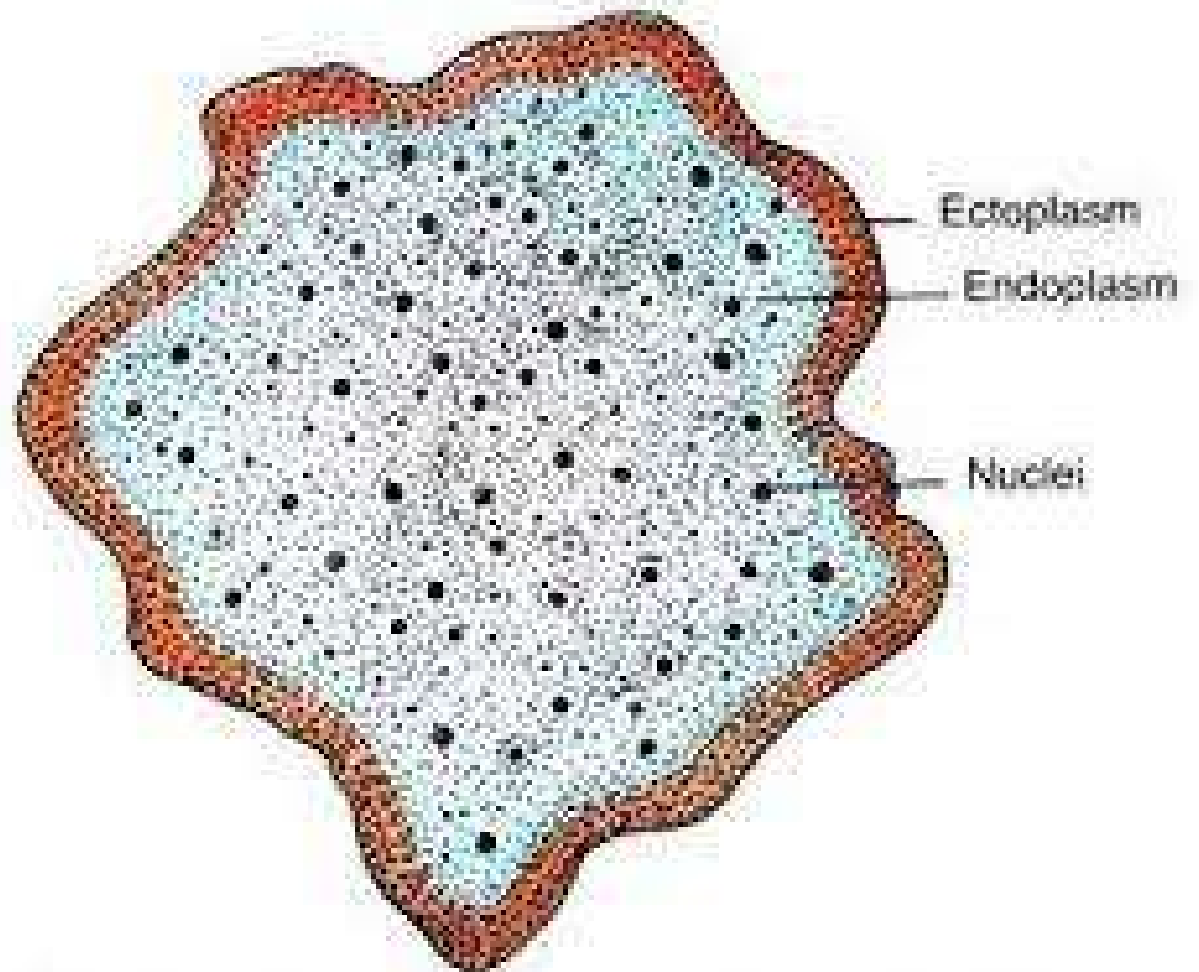
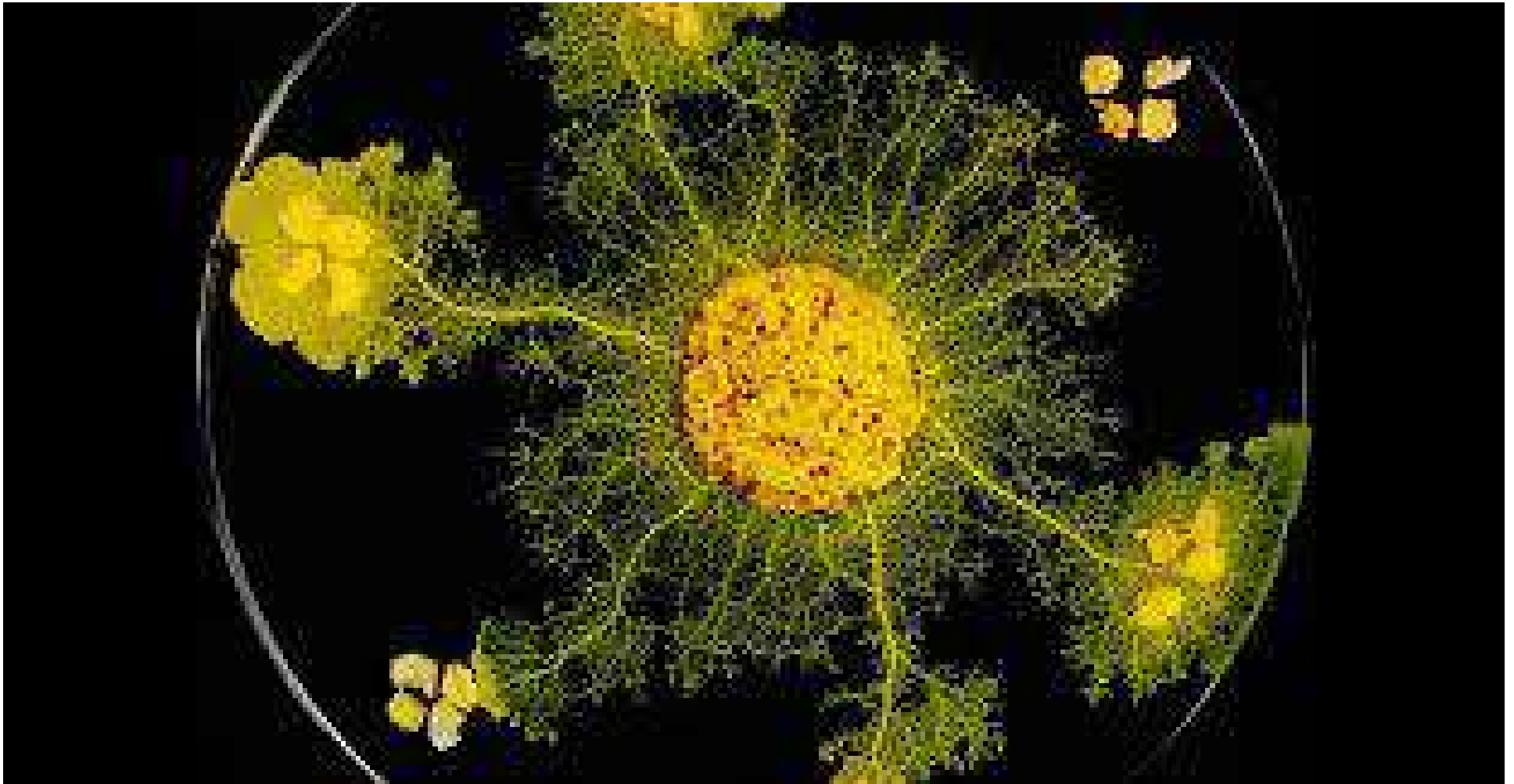


Fig. 24. *Slime molds*. Young diploid plasmodium.

# Plasmodium developing on culture media





# Phaneroplasmodium of *Physarum*

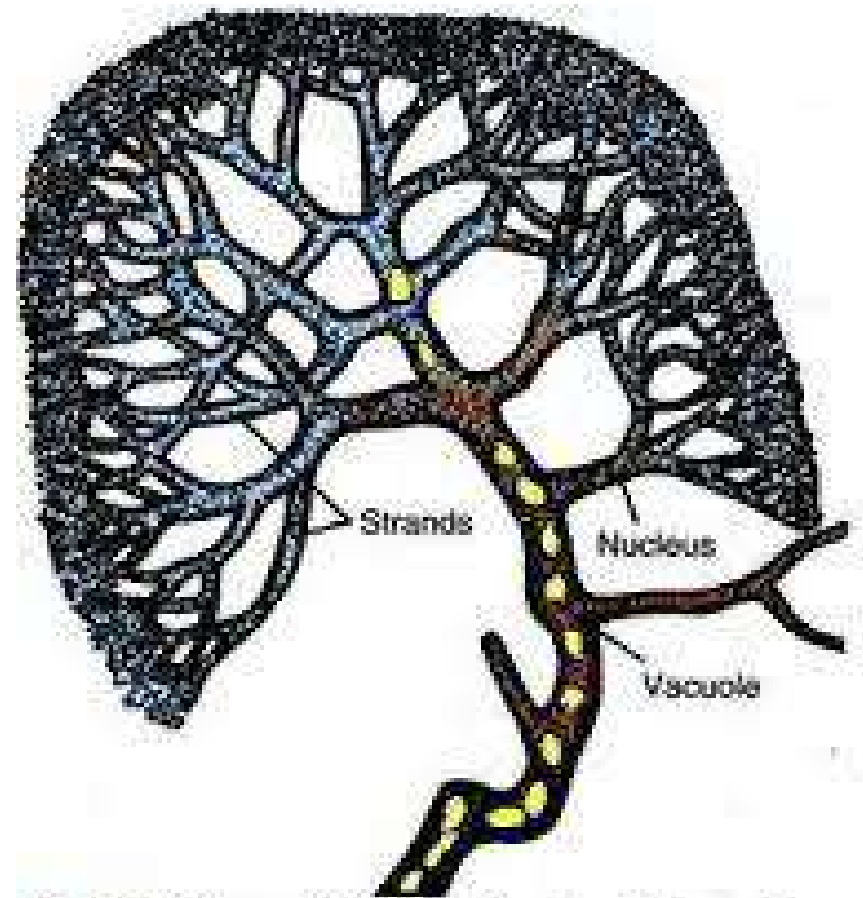
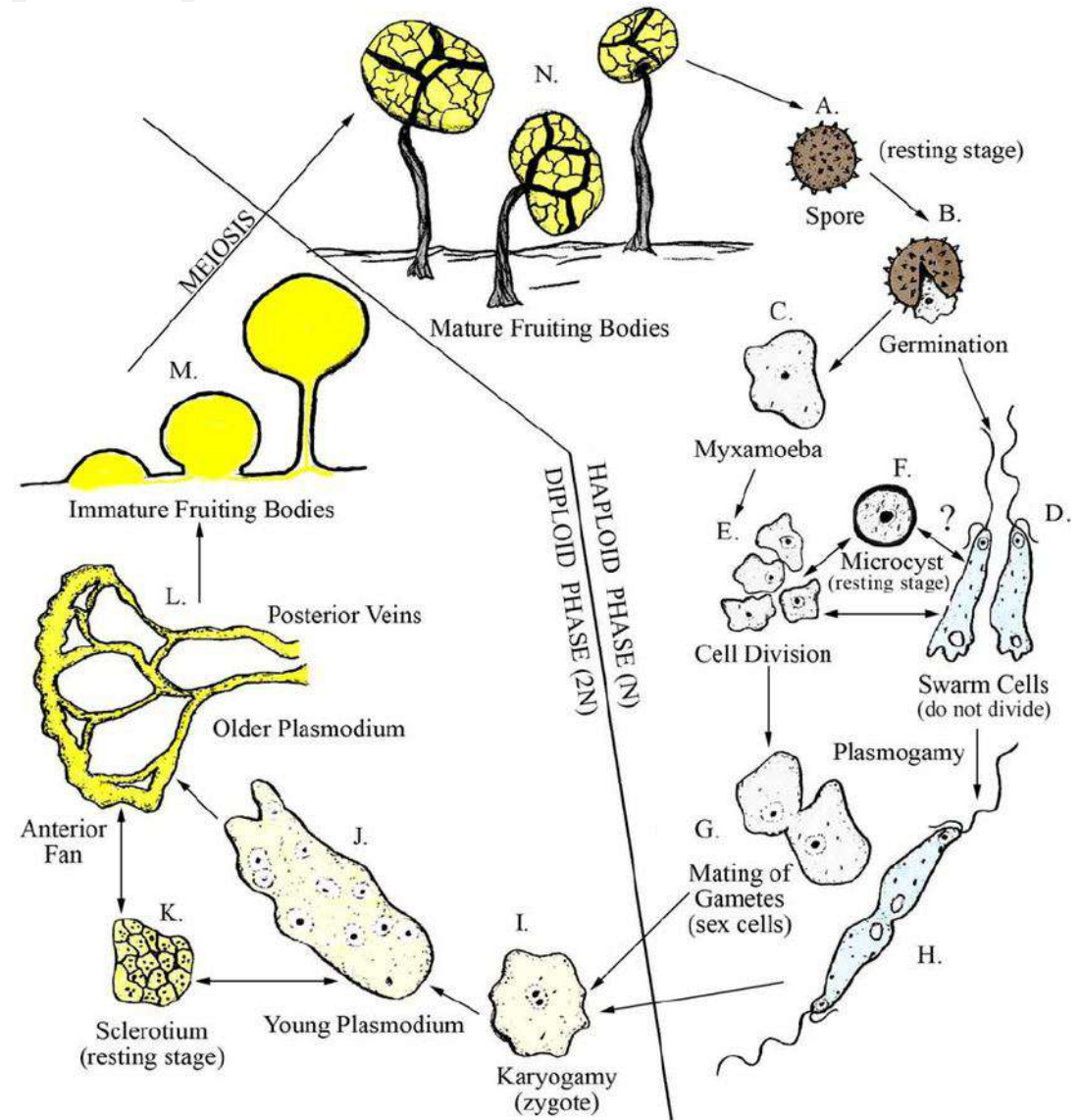


Fig. 2.5. Slime molds. Older fan-shaped plasmodium of *Physarum polycephalum*.

# *Physarum polycephalum*



Life Cycle of a Myxomycete





***THANK YOU***